

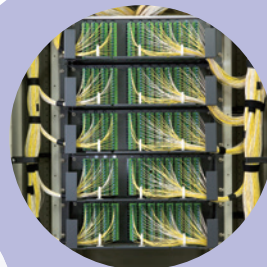
# Lynx-CustomFit™ Splice-On Connector



## Agile Solutions - Fiber Optic Termination



Full lineup



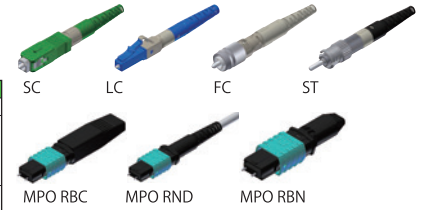
Perfect length



No pre-survey

# Lynx-CustomFit™ Splice-On Connector Ver.2

- Low insertion loss
- Low return loss for analogue systems, etc.
- Wide temperature stability



## Standards and Optical Performance

	SC	LC	FC	ST	Q8MPO / 12MPO
Interface Standard	IEC61754-4	IEC61754-20	IEC61754-13	IEC 61754-2	IEC 61754-7-1
Insertion Loss (against master plug)		SMF: Ave. 0.2dB, Max. 0.3dB MMF: Ave. 0.1dB, Max. 0.25dB			SMF(Std Loss): Max.0.75dB SMF(Low Loss): Max. 0.4dB MMF(Low Loss): Max. 0.4dB
Return Loss (against master plug)		SMF: ≥ 60dB (APC), ≥ 55dB (UPC) MMF: ≥ 30dB (PC)			SMF: ≥ 55dB

## Lineup for Single Fiber Connector

Connector type	Polishing type	Fiber type	Connector color	Fiber / Cord diameter	Boot type	
SC LC FC ST*1	APC	SM	Green	250 / 900μm Tight Buffer 900μm Loose Buffer 2mm with 900μm Tight Buffer 2mm with 900μm Loose Buffer 3mm with 900μm Tight Buffer	Standad boot Short boot *2	
	UPC	SM	Blue			
	PC		MM50(OM2)			Black
			MM50(OM3)			Aqua
			MM62.5(OM1)			Beige

\*1 ST connector is available for SM(UPC polishing) and MM(PC polishing).

\*2 Short boot is available for SC and LC type of 250 / 900 μm tight buffer.

## Lineup for MPO Connector

Guide pin	Fiber/Polishing type	Connector color	Cord diameter
With / Without guide pin	SM Low loss	Yellow	RBN: 8c/12c Bare Ribbon RND: 8c/12c Round cord (φ 3mm) RBC: 8c/12c Ribbon cord
	SM Standard loss	Green	
	MM50(OM2) Low loss*	Black	
	MM50(OM3) Low loss	Aqua	

\* MM50(OM2) Low Loss type is available for 12c (12-fiber).

## Assembly Tool

Tool Name [Part No.]	An appropriate Sumitomo Electric fusion splicer	Fiber cleaver [FC-8R-MC]	Jacket remover [JR-M03]	Hot jacket remover [JR-6+]	Sheath splitter [LYNX-CORDTOOL-1.6-2.4]	Sheath splitter [LYNX-CORDTOOL-2.0-3.0]	Kevlar snips [N-57]	ST assembly tool [LYNX2-ST-ASSEMBLY-TOOL]
Appearance								
Single Fiber	● with all current models	●	●	● for φ0.2~0.4mm fiber	● for 1.6/2.4mm cord	● for 2/3mm cord	●	● for ST connector
MPO	● with ribbon fiber splicer [TYPE-72M12]	●	●	●	● for round cord / ribbon cord	●	●	●

## Fiber Holders for Single Fiber Connector

Type	Part No. Left side (Setting fiber / cord)	Part No. Right side (Setting ferrule sub-assembly)
250μm fiber	FHS-025 or LYNX2-S-LB5(2MM)	LYNX2-C (Plastic, Standard) * or LYNX2-UML-C (Metal, Option)
900μm Tight Buffer	FHS-09 or LYNX2-UML-S	
900μm Loose Buffer	LYNX2-S-LB5(2MM)	
2mm cord with 900μm Tight Buffer	LYNX2-UML-S	
2mm cord with 900μm Loose Buffer	LYNX2-S-LB5(2MM)	
3mm cord with 900μm Tight Buffer	LYNX2-UML-S	

\* 1 pc of LYNX2-C holder is supplied with every 100 connectors.

## Fiber Holders for MPO Connector

Type	Part No. Left side (Setting fiber / cord)	Part No. Right side (Setting ferrule sub-assembly)
Bare Ribbon	12-fiber: FHM-12V 8-fiber: FHM-8	LYNX2-C(MT) (Plastic, Standard) *
Round Cord		or
Ribbon Cord		LYNX2-C(MT) Metal (Metal, Option)

\* 1 pc of LYNX2-C(MT) holder is supplied with every 100 connectors.

# Sumitomo Electric Industries, Ltd.

Tokyo (Japan)  
Sumitomo Electric Industries, Ltd.  
<http://global-sei.com/fttx>

London (United Kingdom)  
Sumitomo Electric Europe Ltd.  
<http://www.sumielectric.com>

Raleigh (United States)  
Sumitomo Electric Lightwave Corp.  
<https://sumitomoelectriclightwave.com/contact-us/>

Dubai (U.A.E.)  
Middle East Office  
TEL: (971) 4-701-7338

Milano (Italy)  
Sumitomo Electric Europe Ltd.  
TEL: (39)-024-9638601

Melbourne (Australia)  
SWS Australia Pty. Ltd.  
TEL: (61) 3-8401-2800

Singapore  
Sumitomo Electric Asia Pacific Pte.Ltd.  
<http://seps.com.sg/>

Gurgaon (India)  
SEI Trading India Pvt. Ltd.  
<http://www.sumitomosplicers.in/>

Hong Kong  
Sumitomo Electric Trading (Shenzhen), Ltd.  
<http://www.seac-china.com/>

Bangkok (Thailand)  
Sumitomo Electric(Thailand)Ltd.  
<http://www.set-th.com/>

Manila (Philippines)  
SEI (Philippines) Incorporated  
TEL: (63) 2-811-2755~56

■ Specifications are subject to change without prior notice.

Designed in Japan  
LYNX02-EN002(2022.7)  
(NS)