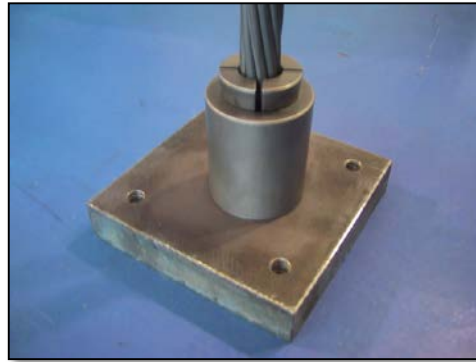
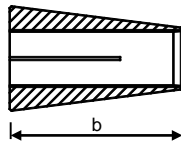
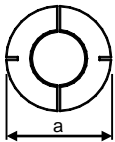


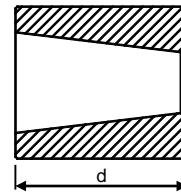
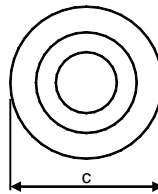
# Wedge and Barrel



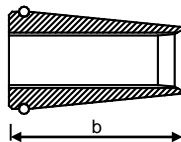
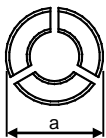
	Wedge			Barrel		
	Diameter a [mm]	Length b [mm]	Material	Diameter c [mm]	Length d [mm]	Material
17.8	36	58	SCM415H [JIS G4052]	50	60	SCM435H [JIS G4052]
19.3	39.5	65	SCM415H [JIS G4052]	55	65	SCM435H [JIS G4052]
21.8	44.5	75	SCM415H [JIS G4052]	65	75	SCM435H [JIS G4052]
28.6	55	90	SCM415H [JIS G4052]	80	90	SCM435H [JIS G4052]
15.2 ECF strand	29	52	SCM415H [JIS G4052] or C15Pb [DIN EN 10277]	50	57.5	S45C [JIS G4051]



Wedge for 17.8 to 28.6 bare strand  
It consists of 2 segments.



Barrel for 17.8 to 28.6 bare strand



Wedge for 15.2 ECF strand  
It consists of 3 segments.

## Sales Department

### Special Steel Wire Division

ADDRESS: 1-1-1, Koya-Kita, Itami, Hyogo 664-0016 Japan

TEL: +81-72-771-0966

FAX: +81-72-771-0502

E-MAIL: [pc-int@info.sei.co.jp](mailto:pc-int@info.sei.co.jp)

URL: <http://www.sei-ssw.co.jp/>