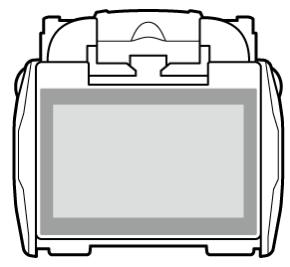


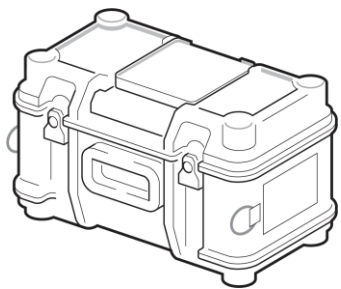
Ribbon fiber splicer

Quick Reference Guide

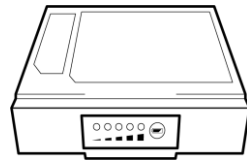
What's included



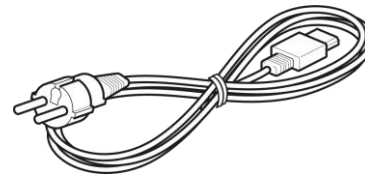
Fusion splicer



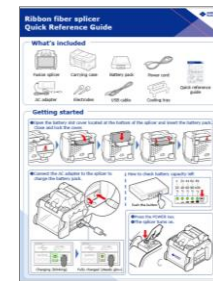
Carrying case



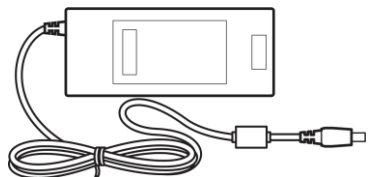
Battery pack



Power cord



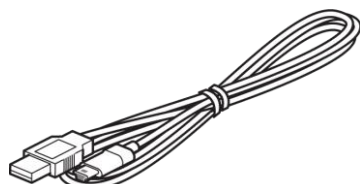
Quick reference guide



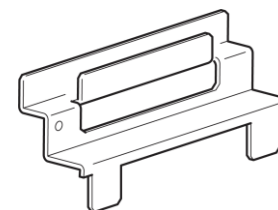
AC adapter



Electrodes



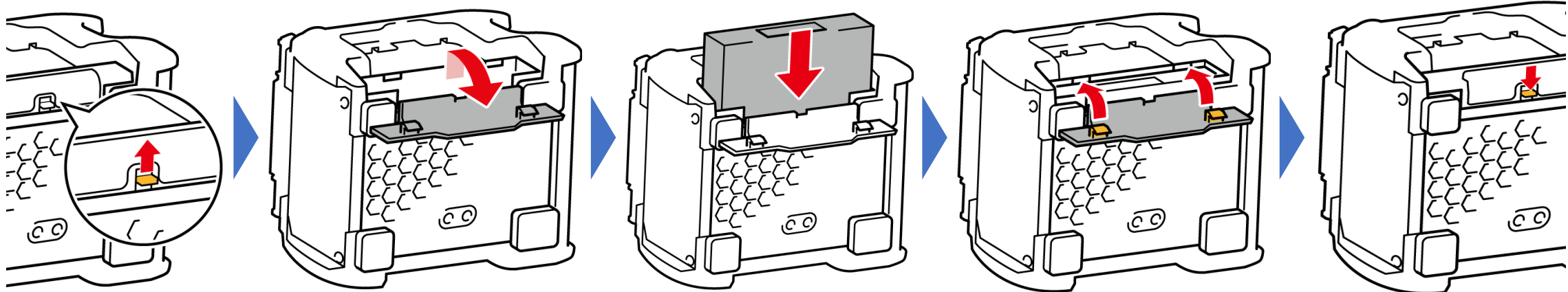
USB cable



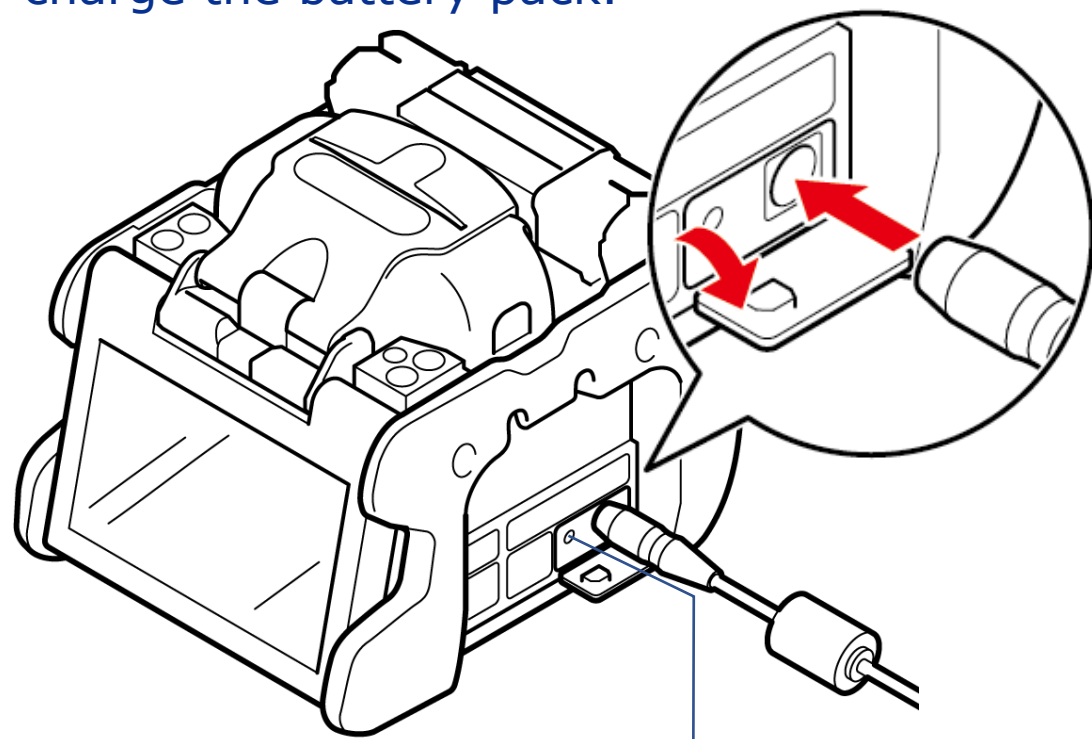
Cooling tray

Getting started

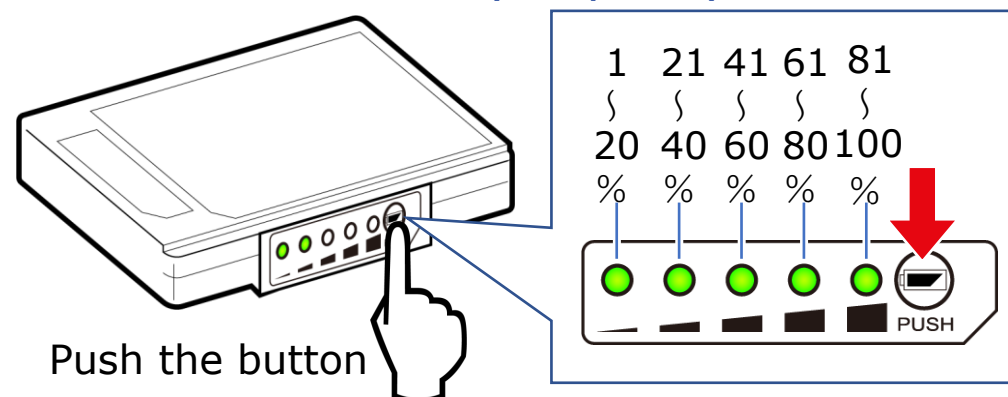
① Open the battery slot cover located at the bottom of the splicer and insert the battery pack. Close and lock the cover.



② Connect the AC adapter to the splicer to charge the battery pack.



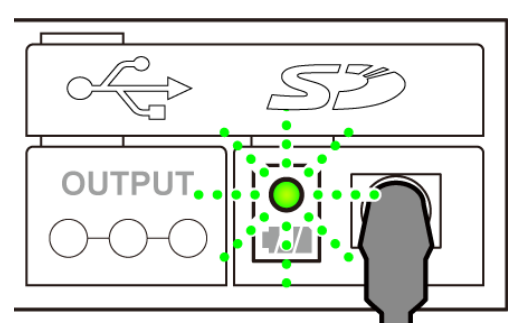
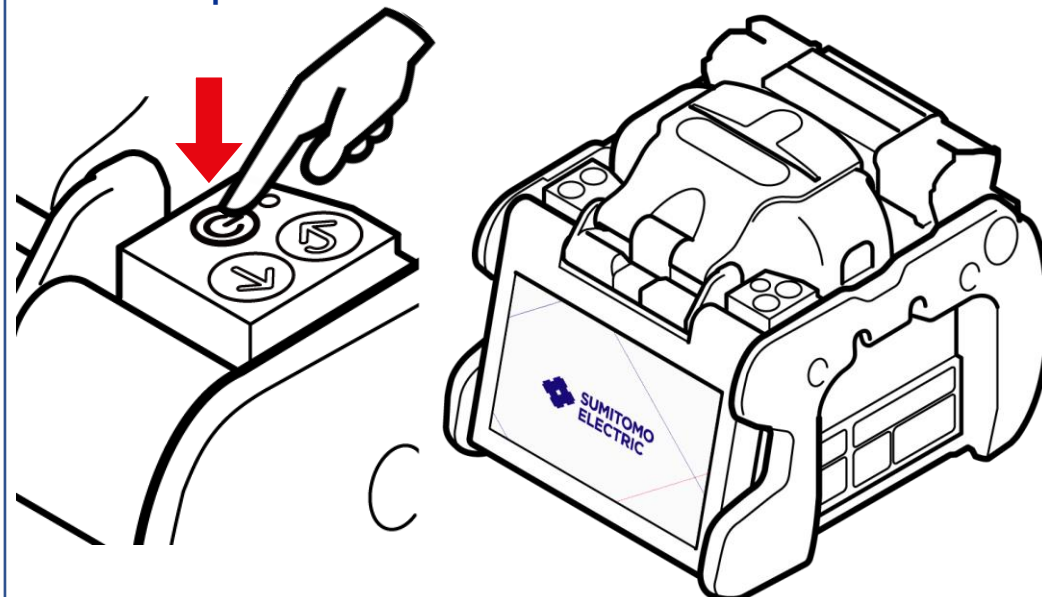
How to check battery capacity left



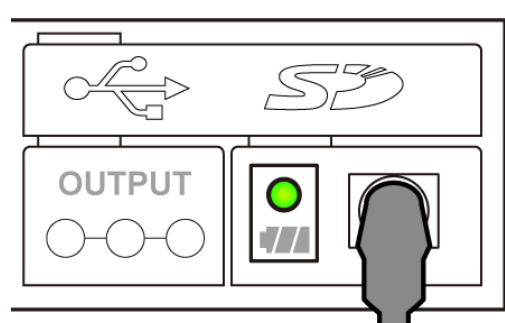
Push the button

③ Press the POWER key.

④ The splicer turns on.



Charging (blinking)

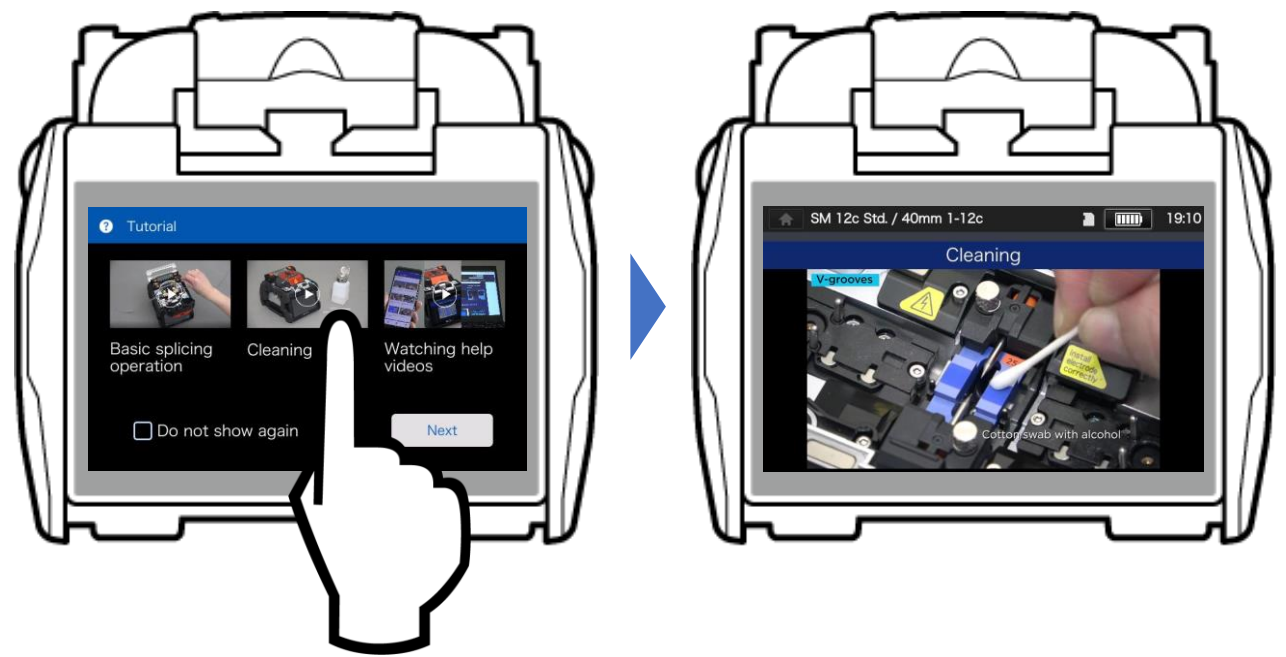


Fully charged (steady glow)

5 The splicer shows thumbnails of tutorial videos.



6 Tap the thumbnail to play the video.



Utilizing Help Videos

On the splicer



Video contents

Basic operation



Inserting the fibers into the splicer



Splicing and protection

Consumables



Replacing the electrodes

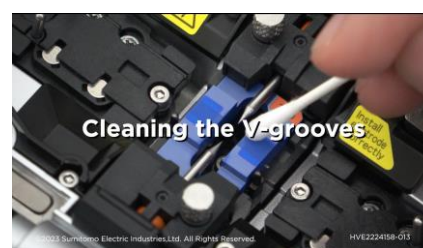


Replacing the V-groove

Also available online



Cleaning



V-grooves



Heat shrink oven

Other Function



Enhanced ACAS

... and more in the list.

