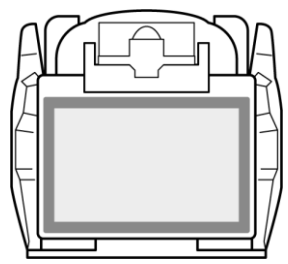
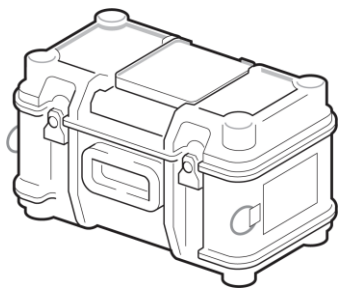


# Core Alignment Fusion Splicer Quick Reference Guide

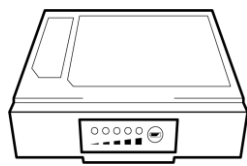
## What's included



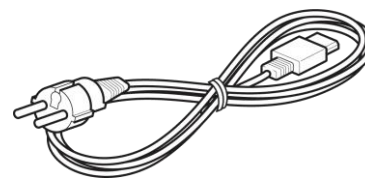
Fusion splicer



Carrying case



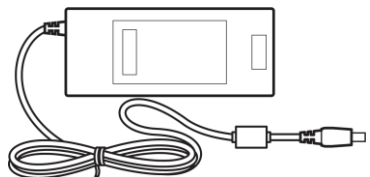
Battery pack



Power cord



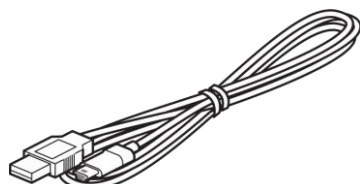
Quick reference guide



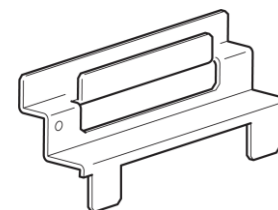
AC adapter



Electrodes



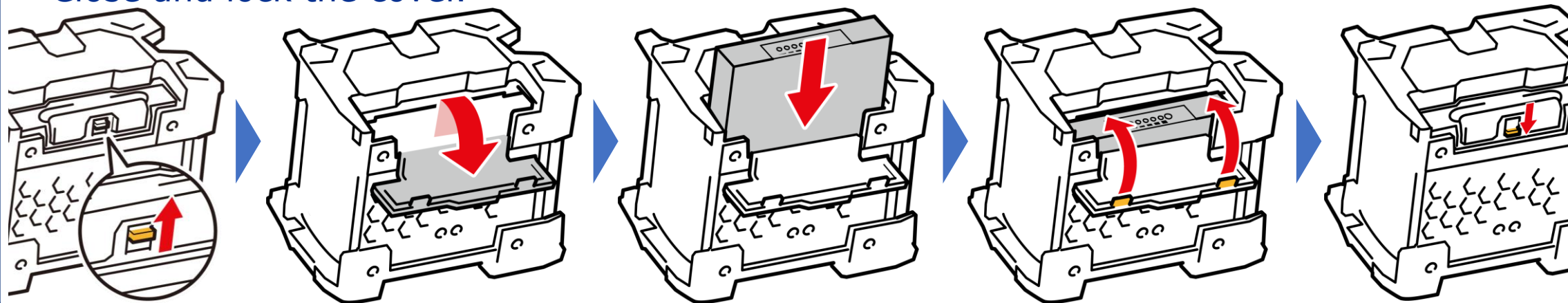
USB cable



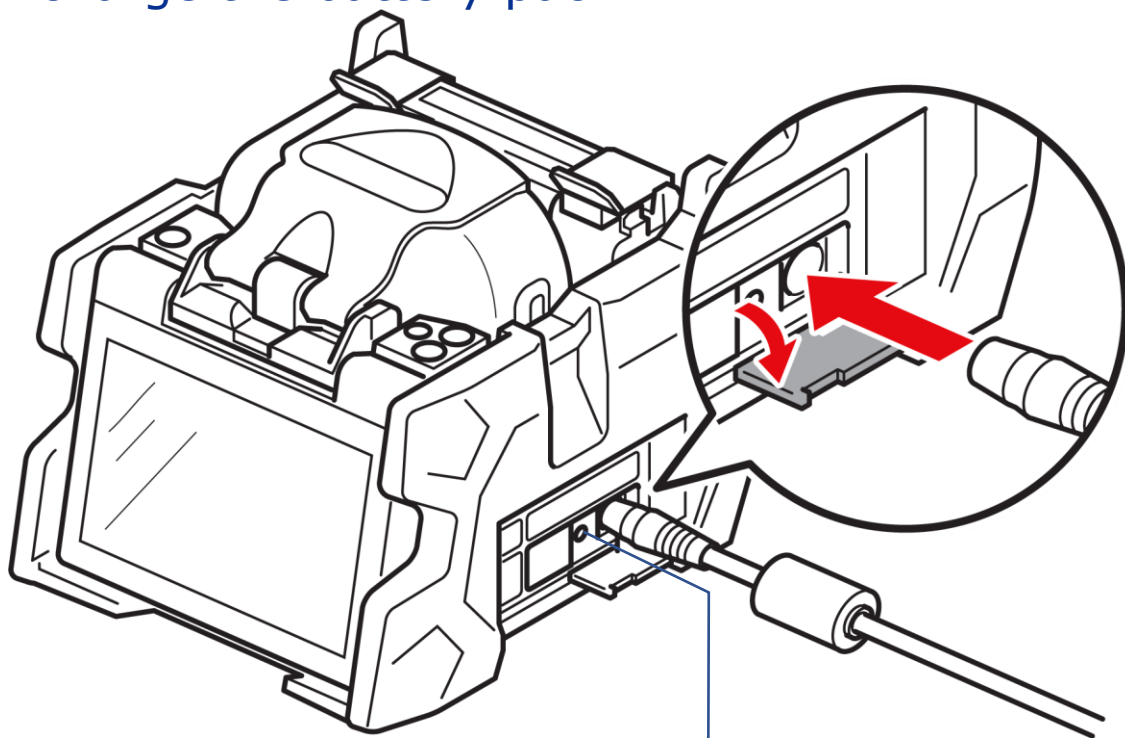
Cooling tray

## Getting started

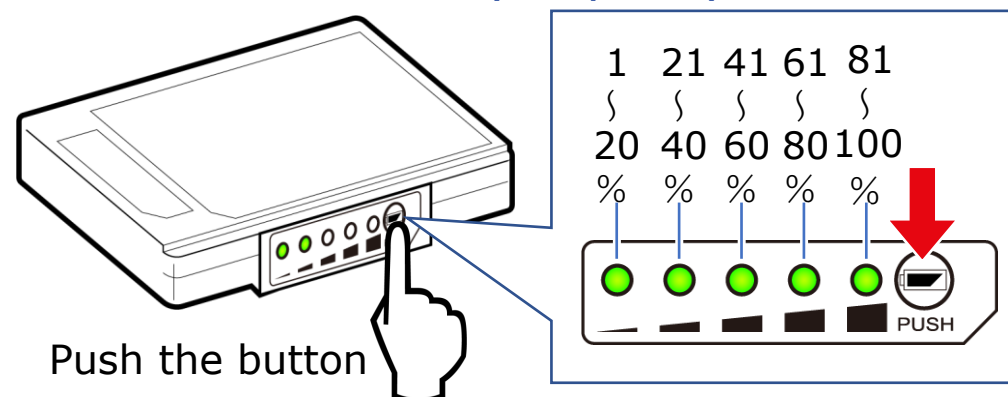
① Open the battery slot cover located at the bottom of the splicer and insert the battery pack. Close and lock the cover.



② Connect the AC adapter to the splicer to charge the battery pack.

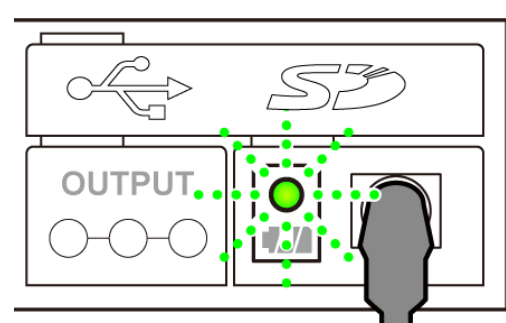
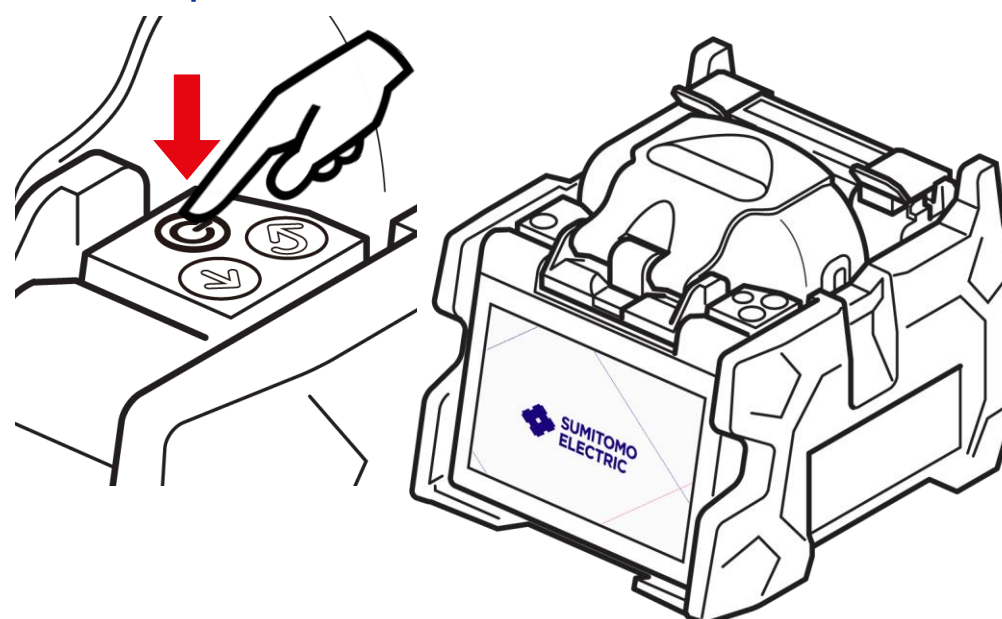


How to check battery capacity left

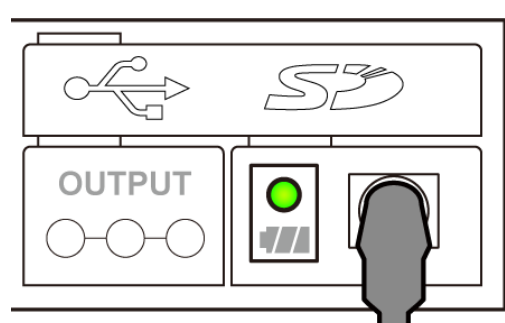


③ Press the POWER key.

④ The splicer turns on.



Charging (blinking)

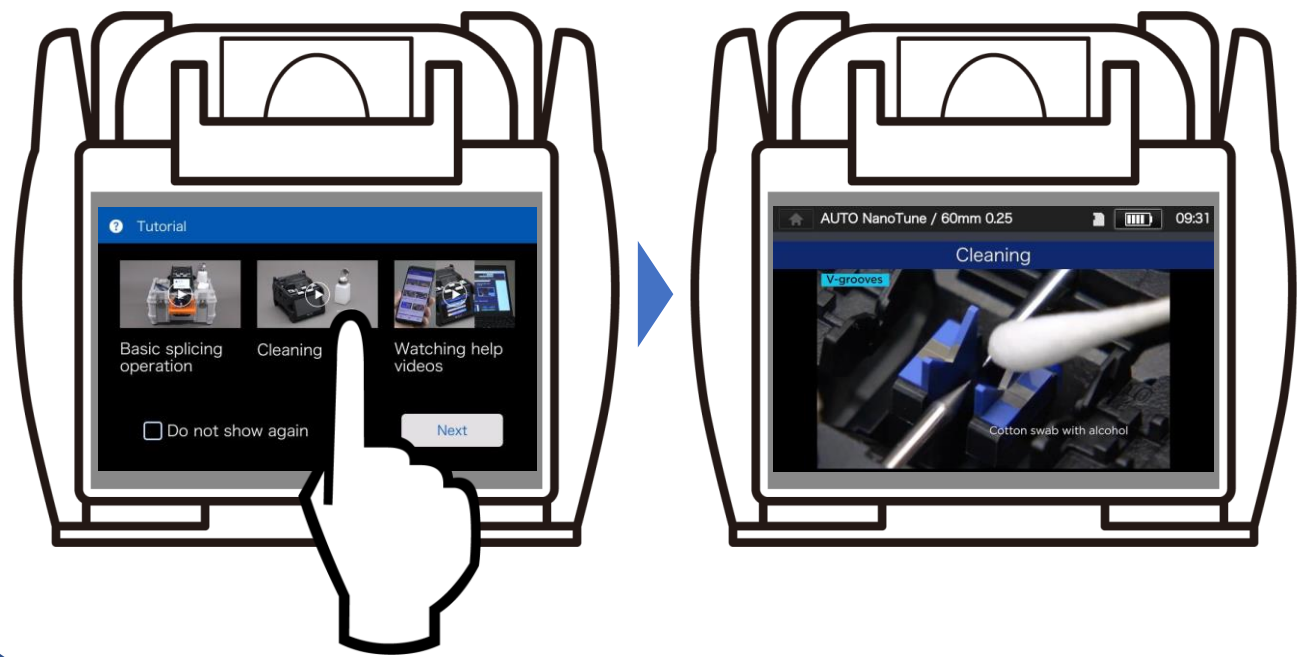


Fully charged (steady glow)

5 The splicer shows thumbnails of tutorial videos.

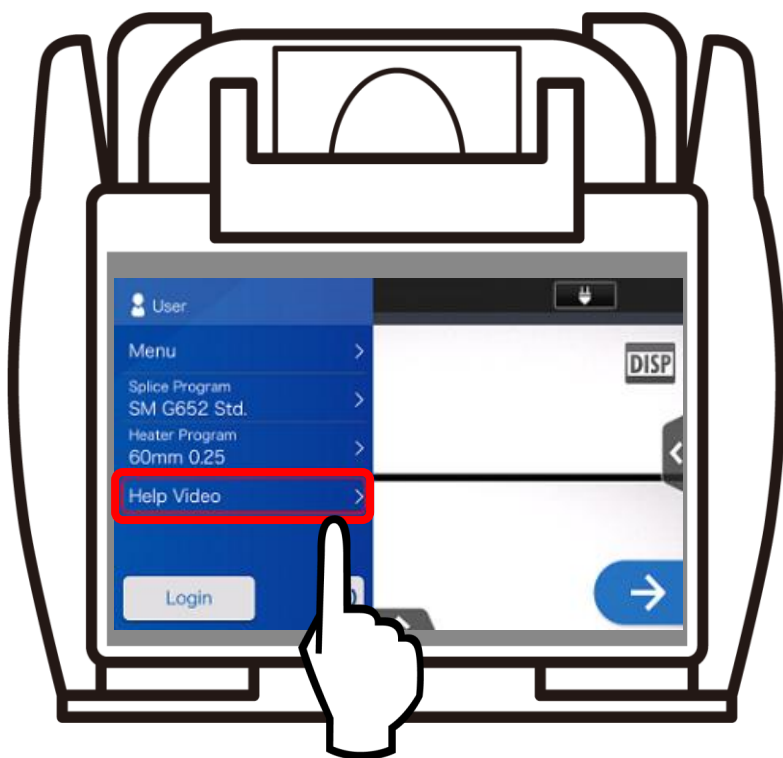


6 Tap the thumbnail to play the video.



## Utilizing Help Videos

On the splicer



Also available online



### Video contents

#### Basic operation



Inserting the fibers into the splicer



Splice protection

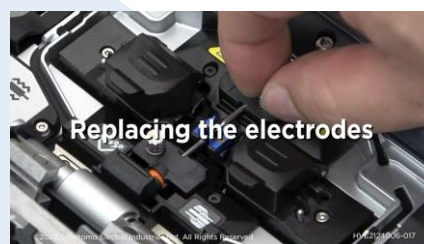


V-grooves



Heat shrink oven

#### Consumables

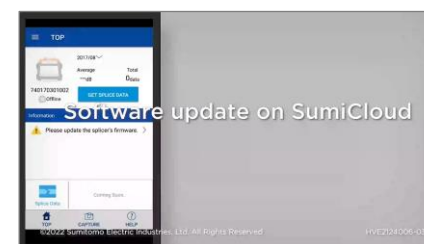


Replacing the electrodes

#### Software update



On a computer



On SumiCloud

... and more in the list.

